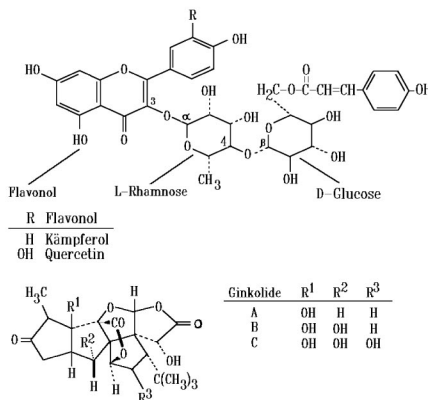




# GINKGO BILOBA EXTRACT EPG 246 (EP)

**NAME OF THE PLANT:** Ginkgo biloba  
**PART OF THE PLANT USED:** Leaves  
**CHEMICAL DEFINITION:** Mixture of Ginkgoflavonglycosides and Ginkgoterpenelactones.  
**SYNONYMS:** --

**STRUCTURAL FORMULA:**



CAS N. 90045-36-6

**TECHNICAL DESCRIPTION:**

Appearance: Brown hygroscopic powder with characteristic odour

Solubility: Soluble in ethanol/water

Identification: HPLC gradient  
TLC

Water content:  
( K. Fischer ) : Less than 3.0 %

Heavy metals: Less than 10 ppm

Sulphated ash: Less than 1.5 %

Assay: Flavonglycosides: Not less than 24.0 %  
 Terpenelactones: Not less than 6.0 %  
 Ginkgolides A+B+C: Between 2.8 % and 3.4 %  
 Bilobalide: Between 2.6 % and 3.2 %

Impurities:  
Ginkgolic acids: Less than 5 ppm

Microbiology: Complies with EP

Storage: Sealed container and protected from moisture

**PRODUCT APPLICATIONS:** Ginkgo biloba extract has an effect on the regulation of blood flow to the brain and is used primarily for the symptomatic treatment of dementia syndrome, deficient memory, disturbances of concentration, dizziness and tinnitus. Ginkgo biloba extract is also a free radical scavenger and powerful antioxidant.

**COSMETIC APPLICATIONS:** include anti ageing, free radical scavenger, antioxidant, improvement of dermal microcirculation and stimulation of lymph drainage.

**THERAPEUTIC CATEGORIES:** Vasodilator, anti-ischemic, free radical scavenger and antioxidant.