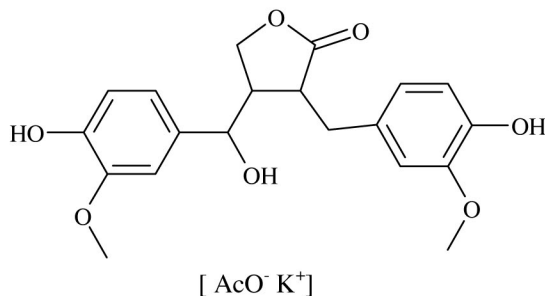




HMRLignan™ (Norway Spruce lignans)

NAME OF THE PLANT:	Picea Abies
PART OF THE PLANT USED:	Branches
FORMULA :	C ₂₀ H ₂₂ O ₇ (hydroxymatairesinol)
IUPAC NAME:	4-[Hydroxy(4-hydroxy-3-methoxyphenyl)methyl]-3-(4-hydroxy-3-methoxybenzyl)-dihydrofuran-2(3H)-one - potassium acetate adduct
STRUCTURAL FORMULA:	



MOLECULAR WEIGHT: 374.39 (hydroxymatairesinol)

TECHNICAL DESCRIPTION:

Appearance: off-white crystalline powder

Solubility: slightly soluble in water and in common organic solvents. Soluble in methanol

Identification: I.R.
U.V.

Assay:

Hydroxymatairesinol +
allo-isomer-potassium
acetate

not less than 90 %

Related substances:

Matairesinols not more than 7 %

Water content: not more than 10 %

Heavy metals: not more than 20 ppm

Microbiology: Complies with EP

Storage: Preserve in tight container, protected from light, heat and humidity

PRODUCT APPLICATIONS: The dietary lignan Hydroxymatairesinol metabolises in humans to the mammalian lignan enterolactone where it has a mild hormone like activity. Research has shown that enterolactone may contribute to prostate health in men, breast health and management of menopausal symptoms in women and cardiovascular health in both men and women.

THERAPEUTIC CATEGORIES: Menopause, prostate health, cardiovascular health, breast health.