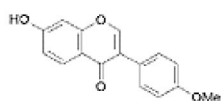




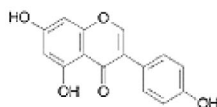
RED CLOVER EXTRACT IFL 40 (USP)

NAME OF THE PLANT:	Red clover, <i>Trifolium pratense</i>
PART OF THE PLANT USED:	Aerial parts of the plant
CHEMICAL DEFINITION:	Mixture of isoflavones: Biochanin A, Formononetin, Daidzein and Genistein
SYNONYMS:	Pavine clover, Cow grass

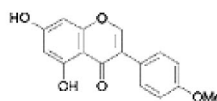
STRUCTURAL FORMULA:



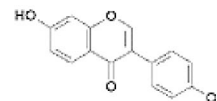
Formononetin



Genistein



Biochanin A



Daidzein

TECHNICAL DESCRIPTION:

Appearance: Dark green amorphous powder

Solubility: Slightly soluble in methanol and organic solvents; insoluble in water

Identity: HPLC
TLC

Loss on drying: Max 3 %

Sulphated ash: Max 4 %

Assay: Not less than 40% total isoflavon-aglycones as:
Biochanin A, Formononetin, Daidzein and Genistein
(in which Biochanin A and Formononetin predominate)

Possible carrier: Maltodextrin

Microbiology: Complies EP

Storage: Sealed container and protected from light and moisture

PRODUCT APPLICATIONS: Red clover isoflavones act as phytoestrogens and are used primarily in the management of menopausal symptoms and to promote cardiovascular health in women. In men Red clover isoflavones are used to support prostate health.

THERAPEUTIC CATEGORIES: Menopause, prostate health, cardiovascular health, breast health, anti-aging.