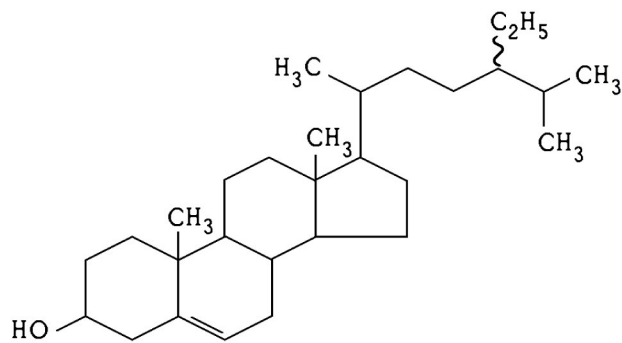




ZEA MAYS UNSAPONIFIABLE FRACTION

NAME OF THE PLANT:	Zea mays
PART OF THE PLANT USED:	Corn
FORMULA:	--
CHEMICAL DEFINITION:	Mixture of natural Hydrocarbons and Phytosterols
SYNONYMS:	--
STRUCTURAL FORMULA:	



(β - SITOSTEROL)

TECHNICAL DESCRIPTION:	Total sterols	
	(as β -sitosterol) :	Between 20 % and 25 %
Appearance:	Dark-brownish paste-like with characteristic odour	Assay: Min. 75 % insaponifiable matter
Solubility:	Soluble in common organic solvents, insoluble in water	Microbiology: Complies with EP
Identification:	TLC GC	Storage: Sealed container
Loss on drying:	Not more than 4.0 %	
Acidity:	Not more than 20	

PRODUCT APPLICATIONS: The Unsaponifiable fraction of Zea Mays is commonly cited to reduce the mobility of the teeth, to mitigate gum swelling and promote repairing of the alveolar bone by stimulating osteocytes. Also believed to increase keratinisation of gingival tissue and to decrease leukocytic infiltration. Zea Mays is also reported to displays a modest anti-inflammatory activity at low doses and may act to decrease in gingival inflammation

THERAPEUTIC CATEGORY: Stomatologic, gum disease.